



Alex Custom Homes & Remodeling

Daisey – Straightforward Series

Total Living: 1,879 SF
3 Bedroom 2.5 Bathroom
2 Car Garage





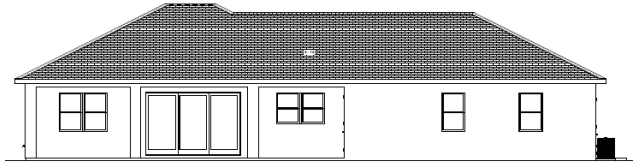
Alex Custom Homes & Remodeling



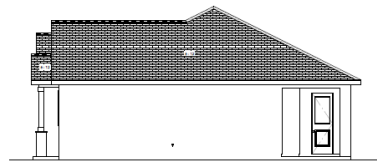
FRONT ELEVATION



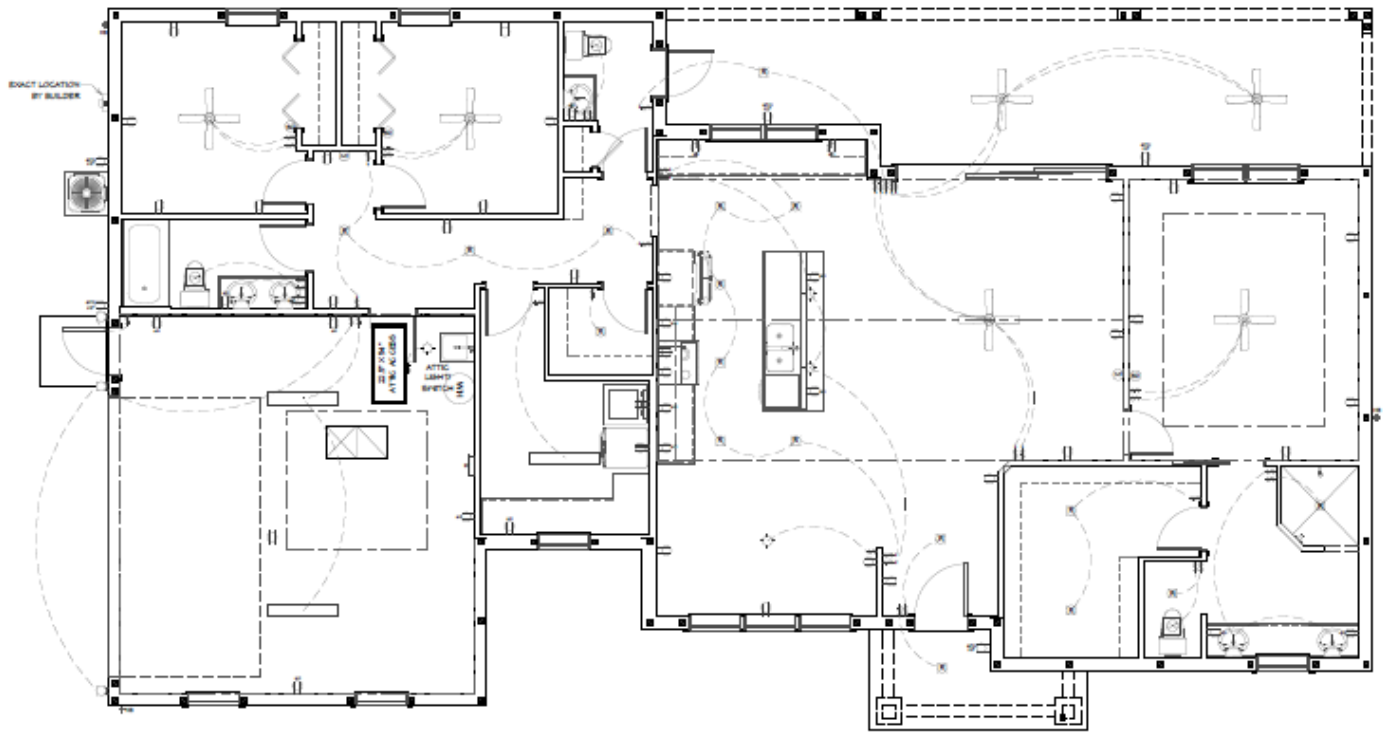
LEFT ELEVATION



REAR ELEVATION



RIGHT ELEVATION





Plans and Engineering:

- Dedicated Plan Design Included
- Engineering Professional Fees Included

Standard Exterior Features:

- Standard 9' 4" Ceiling Heights
- Block Construction
- Standard Knock Down Stucco Exterior Finish with Stucco Columns
- GAF Architectural Shingles Timberline
- Plygem Single Hung Windows - White/White
- Brushed Concrete Porch Floor Finish
- R-38 Blown-In Insulation Package Level 1
- 15 SEER Carrier HVAC System - 1 Zone, 1 Thermostat
- Standard 4" 1hp Well System **Water Filtration or Softening Not Included**
- Standard Trench Bed Septic Systems
- 200 Amp Main Electrical Panel

Standard Interior Features:

- Luxury Vinyl Plank Flooring Throughout Home Including Bathroom Hall or 1/2 Bathrooms
- RTA Cabinetry Package - Shaker Style – White or Grey Uppers and Lower
- Level 1 Granite with 4" Backsplash at Kitchen and Bathrooms
- Tiled Master Bathroom
 - Shower Wall Tile to Ceiling
 - Shower Floor Tile - No Step Shower
 - 1EA Tile Shampoo Niche
 - Main Bathroom Floor Tile
 - Sport Shower - Glass Not Included
- Secondary Bathroom(s)
 - Kohler Sterling Traverse - Fiberglass Tub Insert
 - Matching Luxury Vinyl Plank Flooring
- Bathroom Faucets
 - Moen Genta - Chrome, Brushed Nickel or Black
 - Or
 - Moen Eva - Chrome, Oil Rubbed Bronze, Brushed Nickel
- Kitchen Faucet
 - Moen Sleek Pull Down - Stainless, Chrome, Black, Oil Rubbed Bronze
 - Or
 - Moen Arbor Pull Down - Stainless, Chrome, Black, Oil Rubbed Bronze
- Undermount Stainless Steel Kitchen Sink - 50/50 or Single Bowl



Alex Custom Homes & Remodeling

- Samsung Stainless Steel Appliance Package
 - French Door Refrigerator - RF32CG5100SR
 - Range - NE63A6311SS
 - Microwave - ME16A4021AS
 - Dishwasher - DW80CG4021SRAA
- 8' Hollow Core interior Doors - 2 Panel or 6 Panel
- Kwickset, Cove - Brushed Nickel, Bronze, or Black Interior Hardware
- 5 1/4" Baseboards
- 3 1/4" Door Trim
- Wood Window Sill and Apron